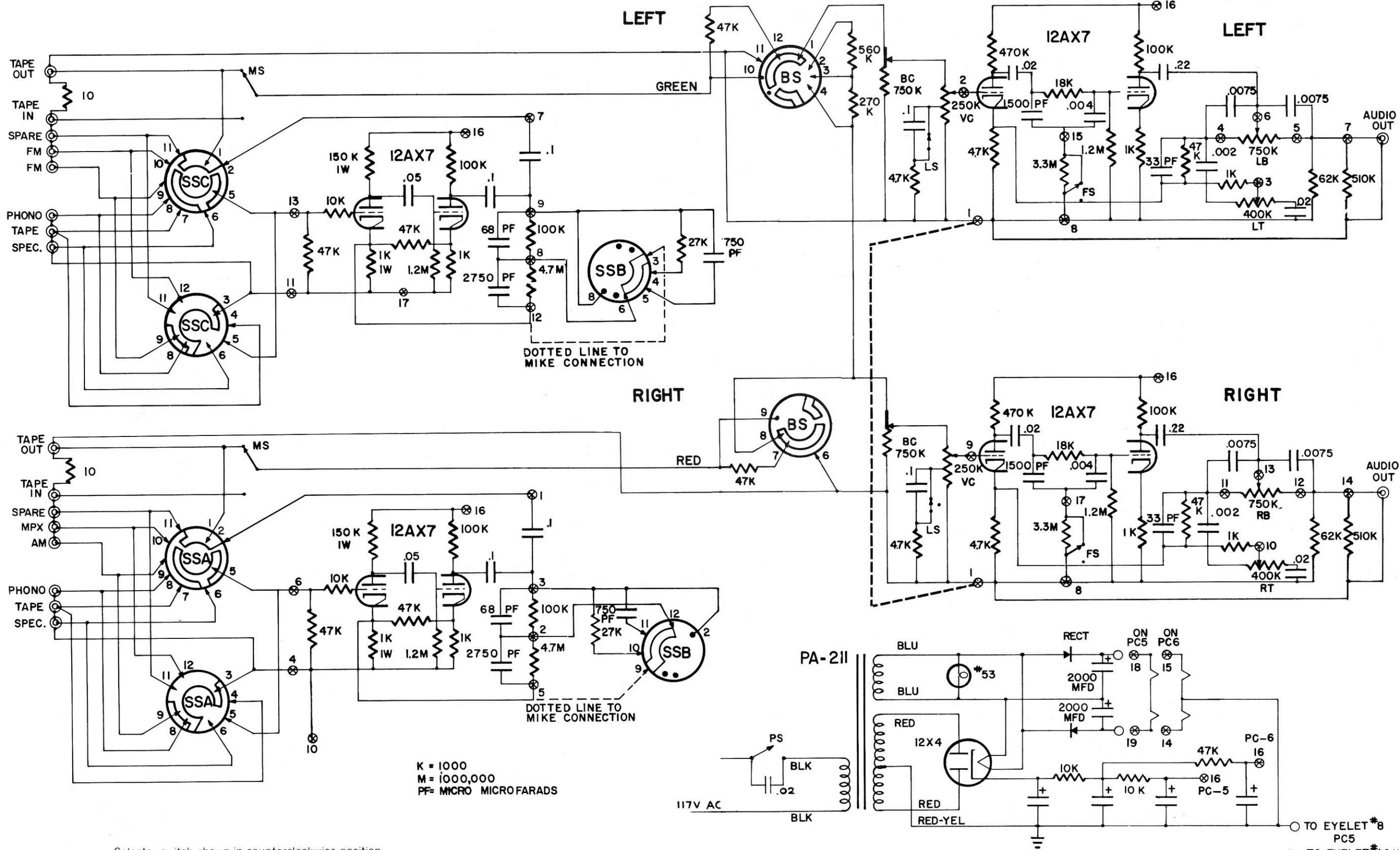


PC-6

PC-5



K = 1000
M = 1,000,000
PF = MICRO MICROFARADS

VOLTAGE CHART

Tube pins numbered clockwise viewed from the bottom.

All readings taken from pin to chassis (except #3 and #4 of 12X4) using a vacuum tube voltmeter.

- Either tube PC-6
- 1 115 V DC
 - 2 0
 - 3 .7 V DC
 - 4 0
 - 5 ± 11 V DC
 - 6 135 V DC
 - 7 0
 - 8 .8 V DC
 - 9 ± 5.5 V DC

- Either tube PC-5
- 1 175 V DC
 - 2 0
 - 3 1.45 V DC
 - 4 Less than 1 volt
 - 5 ± 11 V DC
 - 6 200 V DC
 - 7 0
 - 8 1.25 V DC
 - 9 ± 5.5 V DC

- 12X4
- 1 335 V AC
 - 2 0
 - 3 10.5 V AC
 - 4 0
 - 5 0
 - 6 335 V AC
 - 7 405 V DC

- Quad Filter Capacitor
- 405 V DC
 - ▲ 355 V DC
 - 330 V DC
 - ◐ 210 V DC

Selector switch shown in counterclockwise position

TO EYELET #8
PC5
TO EYELET #4&11
PC6